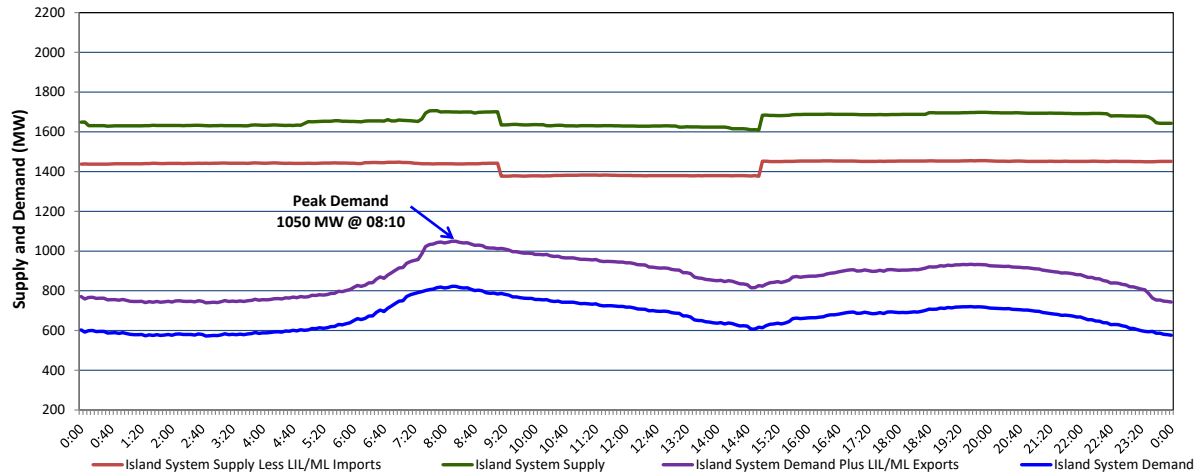


**Newfoundland Labrador Hydro (NLH)
Supply and Demand Status Report Filed Friday, October 14, 2022**

**Section 1
Island Interconnected System Supply, Demand & Exports
Actual 24 Hour System Performance For Thursday, October 13, 2022**



Supply Notes For October 13, 2022

- A As of 0800 hours, July 31, 2022, Holyrood Unit 2 unavailable due to planned outage 150 MW (170 MW).
- B As of 1040 hours, August 27, 2022, Holyrood Unit 3 available but not operating (150 MW).
- C As of 1033 hours, September 27, 2022, Stephenville Gas Turbine unavailable (50 MW).
- D As of 1135 hours, October 05, 2022, Bay d'Espoir Unit 3 unavailable due to planned outage (76.5 MW).
- E As of 1628 hours, October 10, 2022, Bay d'Espoir Unit 4 unavailable due to planned outage (76.5 MW).
- F As of 2017 hours, October 11, 2022, Holyrood Unit 1 available at 150 MW (170 MW).
- G **At 0912 hours, October 13, 2022, Hinds Lake Unit unavailable due to planned outage 65 MW (75 MW).**
- H **At 1457 hours, October 13, 2022, Hinds Lake Unit available (75 MW).**

**Section 2
Island Interconnected Supply and Demand**

Fri, Oct 14, 2022	Island System Outlook ³	Seven-Day Forecast	Temperature (°C)		Island System Daily Peak Demand (MW)	
			Morning	Evening	Forecast	Adjusted ⁷
Available Island System Supply: ⁵	1,553 MW	Friday, October 14, 2022	8	9	955	955
NLH Island Generation: ^{4,8}	1,150 MW	Saturday, October 15, 2022	8	9	805	805
NLH Island Power Purchases: ⁶	95 MW	Sunday, October 16, 2022	11	12	790	790
Other Island Generation:	210 MW	Monday, October 17, 2022	13	13	800	800
ML/LIL Imports:	98 MW	Tuesday, October 18, 2022	13	12	795	795
Current St. John's Temperature & Windchill:	8 °C	Wednesday, October 19, 2022	12	12	800	800
7-Day Island Peak Demand Forecast:	955 MW	Thursday, October 20, 2022	11	13	850	850

Supply Notes For October 14, 2022

- Notes:
1. Generation outages for running and corrective maintenance are included. These are not unusual for power system operations. They generally do not impact customer supply. The power system operators schedule outages to system equipment whenever possible to coincide with periods when customer demands are low and sufficient supply reserves are available. However, from time to time equipment outages are necessary and reserves may be impacted.
 2. Due to the Island system having no synchronous connections to the larger North American grid, when there is a sudden loss of large generating units there may be a requirement for some customer's load to be interrupted for short periods to bring generation output equal to customer demand. This automatic action of power system protection, referred to as under frequency load shedding (UFLS), is necessary to ensure the integrity and reliability of system equipment. Under frequency events have typically occurred 5 to 8 times per year on the Island Interconnected System and the resultant customer load interruptions are generally less than 30 minutes. With the activation of the Maritime Link frequency controller during the winter of 2018, UFLS events have occurred less frequently.
 3. As of 0800 Hours.
 4. Gross output including station service at Holyrood (24.5 MW) and improved NLH hydraulic output due to water levels (35 MW).
 5. Gross output from all Island sources (including Note 4).
 6. NLH Island Power Purchases include: CBPP Co-Gen, Nalcor Exploits, Rattle Brook, Star Lake, Wind Generation and capacity assistance (when applicable).
 7. Adjusted for curtailable load, market activities and the impact of voltage reduction when applicable.
 8. Due to limitations inherent in the design of combustion turbines, the output of combustion turbines may be reduced in the event that ambient temperatures exceed the threshold.

**Section 3
Island Peak Demand Information
Previous Day Actual Peak and Current Day Forecast Peak**

Thu, Oct 13, 2022	Actual Island Peak Demand ⁹	8:10	1,050 MW
Fri, Oct 14, 2022	Forecast Island Peak Demand		955 MW

Notes: ⁹ Island Demand / LIL / ML Exports (where applicable) is supplied by NLH generation and purchases, plus generation owned and operated by Newfoundland Power and Corner Brook Pulp & Paper (Deer Lake Power, DLP).